

# KM-151B\_H

Item # \_\_\_\_\_

Project: \_\_\_\_\_

Qty: \_\_\_\_\_

\*AutoCad available on KCL

## SELF-CONTAINED CUBER WITH BUILT-IN STORAGE BIN

KM-151B\_H

3/30/15

Item # 13236

### CUBER DIMENSIONS W x D x H

**KM-151B\_H**  
23<sup>3/4</sup> x 28<sup>1/4</sup> x 39\*  
\* with 6" legs





### KM-151BAH

Air-Cooled  
Shown

### KM-151BWH

Water-Cooled

- Up to 146 lbs. of ice production per 24 hours
- Up to 78 lbs. of built-in storage capacity
- Individual crescent cube
- Durable stainless steel exterior
- CycleSaver™ Design 
- EverCheck™ alert system 
- Front in, front out airflow (Air-cooled model only)
- Stainless steel evaporator
- Slide in door
- Removable air filter (Air-cooled model only)
- Power switch accessible without panel removal
- Built-in installation possible
- R-134a Refrigerant

\* The KM-151BAH is ENERGY STAR qualified.

### Warranty

Valid in United States, Canada, Puerto Rico, & U.S. Territories. Contact factory for warranty in other countries.

**Three Year** - Parts & Labor on entire machine.

**Five Year** - Parts & Labor on: Evaporator.

**Five Year** - Parts on: Compressor, air-cooled condenser coil.



ISO9001-15014001

© HOSHIZAKI AMERICA, INC.

618 Hwy. 74 S., Peachtree City, GA 30269

TEL 1-800-438-6087

FAX 1-800-345-1325

www.hoshizaki.com



# SELF-CONTAINED CUBER WITH BUILT-IN STORAGE BIN

## DIMENSIONS

W x D x H

**KM-151B\_H**  
23<sup>3/4</sup> x 28<sup>1/4</sup> x 39\*  
\*with 6" legs

- Air-cooled
- Water-cooled

### AIR-COOLED

Water Temp ° F.	50°	70°	90°
Air Temp ° F. 70°	146	139	129
Air Temp ° F. 80°	140	129	119
Air Temp ° F. 90°	139	<b>121</b>	111

### WATER-COOLED

Water Temp ° F.	50°	70°	90°
Air Temp ° F. 70°	146	141	136
Air Temp ° F. 80°	142	135	131
Air Temp ° F. 90°	141	<b>130</b>	125

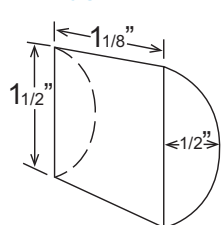
### UTILITY CONSUMPTION

Model Number	Ice Production Per Cycle		KWH per 100 LBS.	Potable Water Gal. per 100 lbs.	Condenser Water Gal. per 100 lbs.
	Lbs.	Cubes			
KM-151BAH	2.75	130	8.4	17.8	N/A
KM-151BWH	2.75	130	7.3	25.0	140

### SPECIFICATIONS

Model Number	Condenser	Amperage	Min. Circuit Ampacity	Shipping Weight
KM-151BAH	Air-Cooled	7.0	15A	156 lbs.
KM-151BWH	Water-Cooled	6.8	15A	156 lbs.

### \*KM CUBE DIMENSIONS



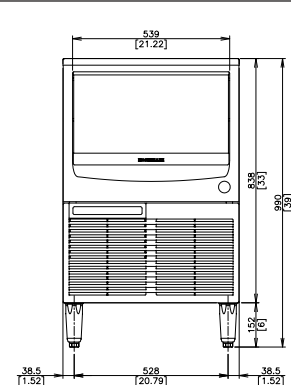
\*approximate size in inches, image not to scale

### ELECTRICAL & PLUMBING/KM-151B\_H

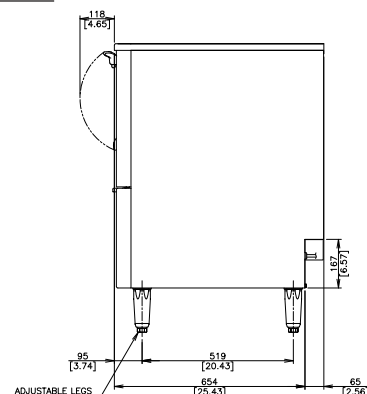
- 115V/60/1
- 15 amp Max Fuse/HACR Breaker Size
- Icemaker Water Supply Line: Minimum 1/4" Nominal ID Copper Water Tubing or Equivalent
- Icemaker Drain Line: Minimum 3/4" Nominal ID Hard Pipe or Equivalent
- Water-Cooled Model (Lines Must be Independent of Icemaker)
- Condenser Water Supply Line: Minimum 1/4" Nominal ID Copper Water Tubing or Equivalent
- Condenser Drain/Return Line: Minimum 1/4" Nominal ID Hard Pipe (open drain system) or Copper Water Tubing (closed loop system) or Equivalent



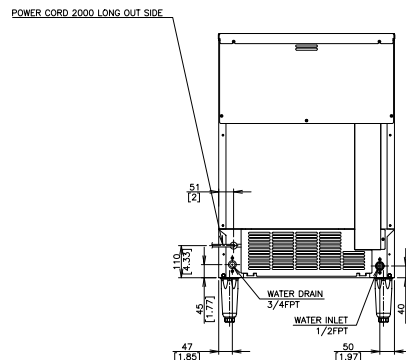
© HOSHIZAKI AMERICA, INC.



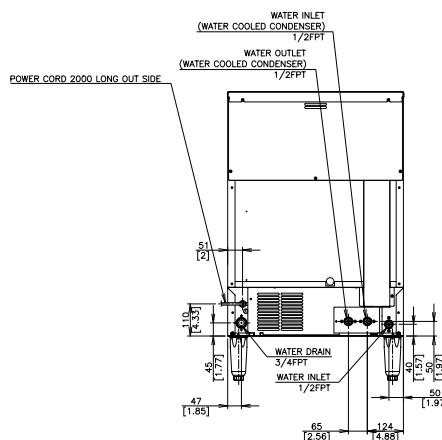
AIR-COOLED / WATER-COOLED FRONT VIEW



AIR-COOLED / WATER-COOLED SIDE VIEW



AIR-COOLED BACK VIEW



WATER-COOLED BACK VIEW

### OPERATING LIMITS

- Ambient Temp Range 45 - 100°F
- Water Temp Range 45 - 90°F
- Water Pressure 10 - 113psig
- Voltage Range 104 - 127V

