



Outperform every day.™

**Project:**  
**Item Number:**  
**Quantity:**

## CAYENNE® CORD AND PLUG HEAT STRIPS



*Note: Must be used with legs. Order separately.*

### ITEMS

72672019	18" (47.7 cm)
72675019	24" (60.9 cm)
72678019	30" (76.2 cm)
72681019	36" (91.4 cm)
72684019	42" (106.6 cm)
72687019	48" (121.9 cm)
72693019	60" (152.4 cm)

**Note:** All models require either 13" (33 cm) C legs or Adjustable T-legs. See back page for details.

### HEIGHT RECOMMENDATIONS

Recommended distance from the Cayenne® Heat Strip to the surface below to keep food at ideal temperatures:

Over Non-Combustible Surface		Over Combustible Surface	
Minimum Height	Maximum Height	Minimum Height	Maximum Height
11" (27.9 cm)	16" (40.6 cm)	13" (33.2 cm)	16" (40.6 cm)

**Note:** Minimum height is the UL required minimum distance over a combustible or non-combustible surface.  
**Note:** Maximum height is the maximum height to retain food quality under normal conditions.

### UL REQUIRED CLEARANCES

Clearance	Non-Combustible Surface	Combustible Surface
Top of strip to surface above (minimum)	1" (2.5 cm)	2" (5.1 cm)
Bottom of strip to surface below	See table above.	
Side of strip to adjacent surface (minimum)	1" (2.5 cm)	5" (12.7 cm)
Setback from front opening on pass thru application: maximum of 8" (20.3 cm)		

**WARRANTY:** All models shown come with Vollrath's standard warranty against defects in materials and workmanship. For full warranty details, please refer to [www.Vollrath.com](http://www.Vollrath.com).

### DESCRIPTION

The Cayenne® Heat Strip is intended to be used as a heat source to help maintain food at safe temperatures until served.

### FEATURES

- Structurally engineered aluminum heater housing offers maximum strength with minimal weight
- Recessed dovetail channel allows for installation of decorative trim
- Optional Kool-Touch® thermoplastic trim drastically reduces fascia temperature for safer operation
- Reflector generates maximum performance for wider heat dispersion and offers larger temperature zone above 140°F (60° C) for safe food holding
- Anodized bright aluminum heat reflector generates more even heat over food display area
- Reflector/heater assembly is field adjustable allowing operator to direct heat pattern for optimum overhead heat
- Sheathed element for dependability and longer life
- Unique element design offers greater heat dispersion for more effective warming
- Two screws allow quick service access to element
- Provided with onboard toggle switch controls
- One year parts and labor warranty. Additional one year warranty on heating element (parts only).
- 6-ft. (182.8 cm) cord and plug

**Note:** All heat strips are custom ordered and therefore cannot be cancelled or returned per Vollrath Terms & Conditions.

### Agency Certifications



Due to continued product improvement, please consult [www.vollrath.com](http://www.vollrath.com) for current product specifications.

Approvals	Date



Outperform every day.™  
[www.vollrath.com](http://www.vollrath.com)

The Vollrath Company, L.L.C.  
1236 North 18th Street  
Sheboygan, WI 53081-3201 U.S.A.  
Customer Service: 800.628.0830  
Canada Customer Service: 800.695.8560  
Main Fax: 800.752.5620 or 920.459.6573

Technical Services: 800.628.0832  
Technical Services Fax: 920.459.5462

# CAYENNE® CORD AND PLUG HEAT STRIPS

## MOUNTING OPTIONS

### Legs

Item Number	Leg Style
44504	<b>T-Leg</b> Adjustable 8" to 15" (22.8 to 38.1 cm)
4450613	<b>C-Leg</b> 13" (33.0 cm)



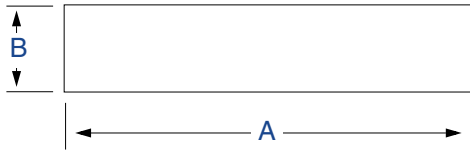
## ACCESSORIES

### Kool-Touch® Trim

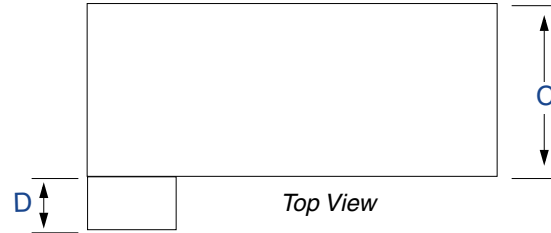


Item No.	Trim Length	Case Lot
1789718	18" (45.7)	2
1789724	24" (60.9)	2
1789730	30" (76.2)	2
1789736	36" (91.4)	2
1789742	42" (106.6)	2
1789748	48" (121.9)	2
1789754	54" (137.1)	2
1789760	60" (152.4)	2

## DIMENSIONS



Front View



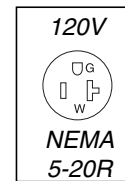
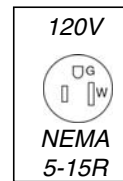
Top View

Control Box

## SPECIFICATIONS

Item Number	Dimensions IN (CM)				Electrical			Approximate Shipping Weight LB (KG)
	(A) Length	(B) Height	(C) Width	(D) Additional Width of Control Box	Amp Draw (120V)	Heater Wattage	Plug	
72672019	18" (47.7)	2.88" (7.32) All Units	6" (15.24) All Units	3" (7.62) All Units	3.5	415	NEMA 5-15P	6.1 (2.7)
72675019	24" (60.9)				4.6	550		7.2 (3.2)
72678019	30" (76.2)				5.8	690		8.3 (3.7)
72681019	36" (91.4)				6.9	825		9.3 (4.1)
72684019	42" (106.6)				8.0	965		10.4 (4.6)
72687019	48" (121.9)				9.2	1100		11.5 (5.1)
72693019	60" (152.4)				11.5	1380	NEMA 5-20P	13.8 (6.2)

### Receptacles



Outperform every day.™

[www.vollrath.com](http://www.vollrath.com)

The Vollrath Company, L.L.C.  
1236 North 18th Street  
Sheboygan, WI 53081-3201 U.S.A.  
Customer Service: 800.628.0830  
Canada Customer Service: 800.695.8560  
Main Fax: 800.752.5620 or 920.459.6573

Technical Services: 800.628.0832  
Technical Services Fax: 920.459.5462