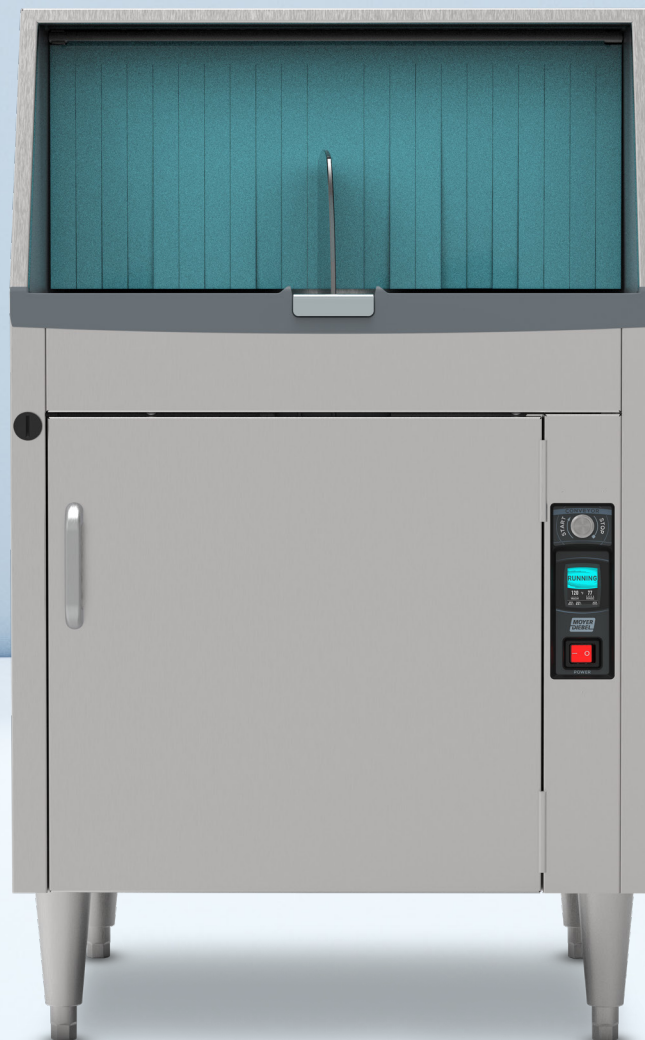




REVOLUTION

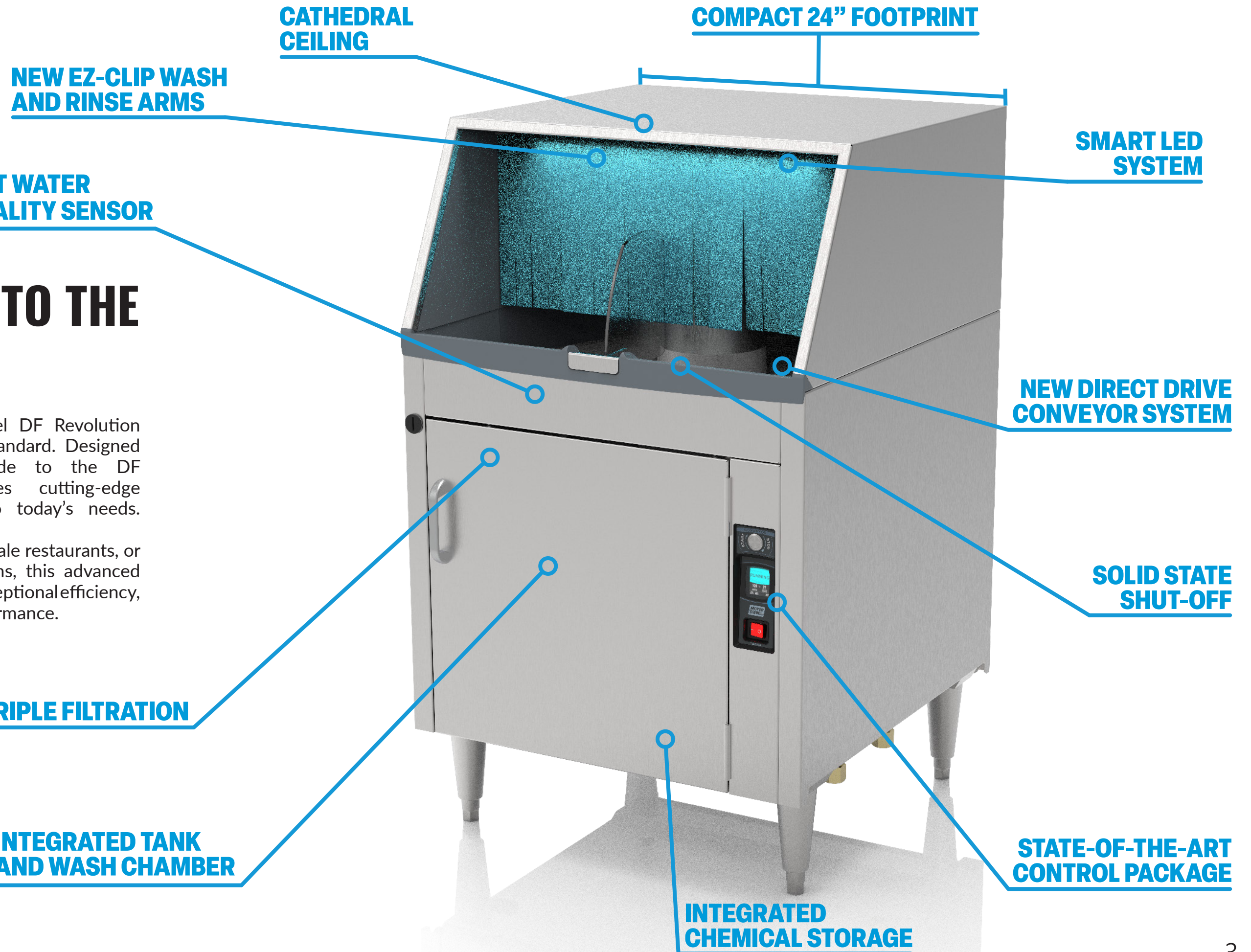


moyerdiebel.com
mdlcanada.com

A LEAP INTO THE FUTURE

The new Moyer Diebel DF Revolution sets a new industry standard. Designed as a modern upgrade to the DF blueprint, it features cutting-edge technology tailored to today's needs.

Ideal for busy bars, upscale restaurants, or large catering operations, this advanced glasswasher delivers exceptional efficiency, sustainability, and performance.

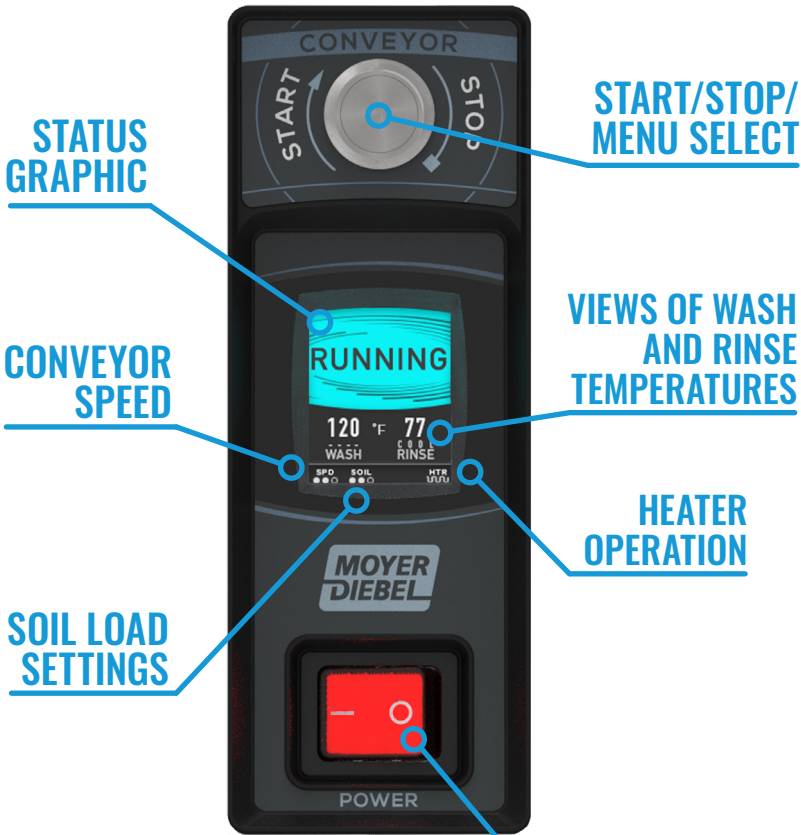


THE HEART OF INNOVATION

LCD FEATURES

Our industry exclusive integrated user interface provides all operating information conveniently in a single location on the front of the machine. Users are able to easily read the Status, Wash and Rinse Temperatures, Conveyor Speed, Soil Load Setting and Heater Operation.

The DF Revolution is equipped with a sophisticated array of sensors and advanced monitoring algorithms, ensuring the highest quality wash performance.



ONE BUTTON OPERATION FOR AUTO-FILL AND AUTO-CLEAN
No more fuss with hard-to-reach stand pipes - only effortless functionality and ease of daily operation.



PRECISE DIAGNOSTICS

User guidance screens ensure common challenges are overcome effortlessly, and flashing LED lights provide clear visual alerts, even in busy environments.

NOTICE: The graphics displayed are for demonstration purposes only and do not depict the full range of feedback services available. For further information, consult the Operations Manual.

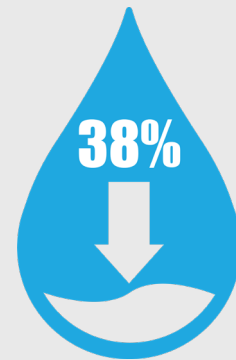
Your New Star Behind the Bar



AN ENGINEERING FEAT

AI WASH WATER VOLUME & WATER QUALITY SENSING SYSTEM

The DF Revolution uses AI to continuously manage all aspects of wash water. Smart algorithms ensure water stays clean by replacing it as needed, maintaining optimal wash performance.



The machine consistently monitors and adjusts the water level in the wash chamber, cutting water consumption by an unmatched 38%. This best-in-class performance will translate to annual operating savings.

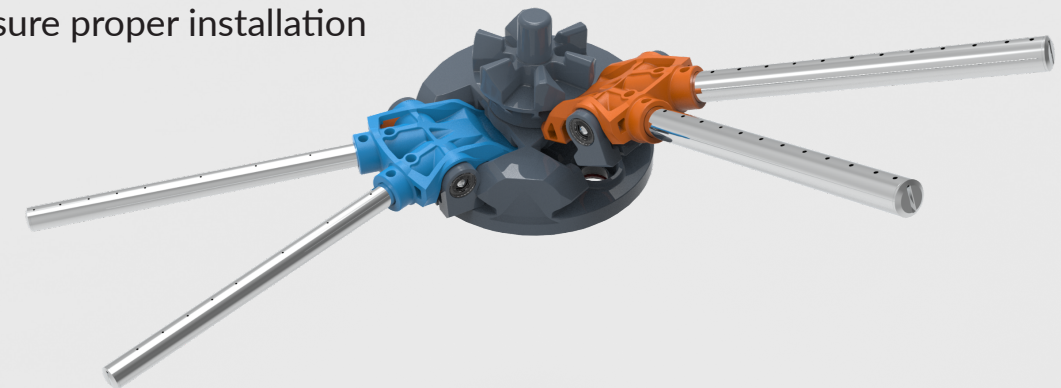
PRECISE WATER CONTROL



The Cathedral Ceiling of the wash tank works together with the revolutionary wash arms to control water. The precise cool water rinse system provides a signature cool, clean glass ready to serve your guests.

The completely redesigned wash and rinse arms provide many advantages:

- Revolutionary EZ-Clip snap-in and snap-out for simple daily care
- Precision water spray pattern to clean the most stubborn of glassware
- Removable end caps on all arms for easy cleaning and maintenance
- AI monitoring to ensure proper installation and cleaning

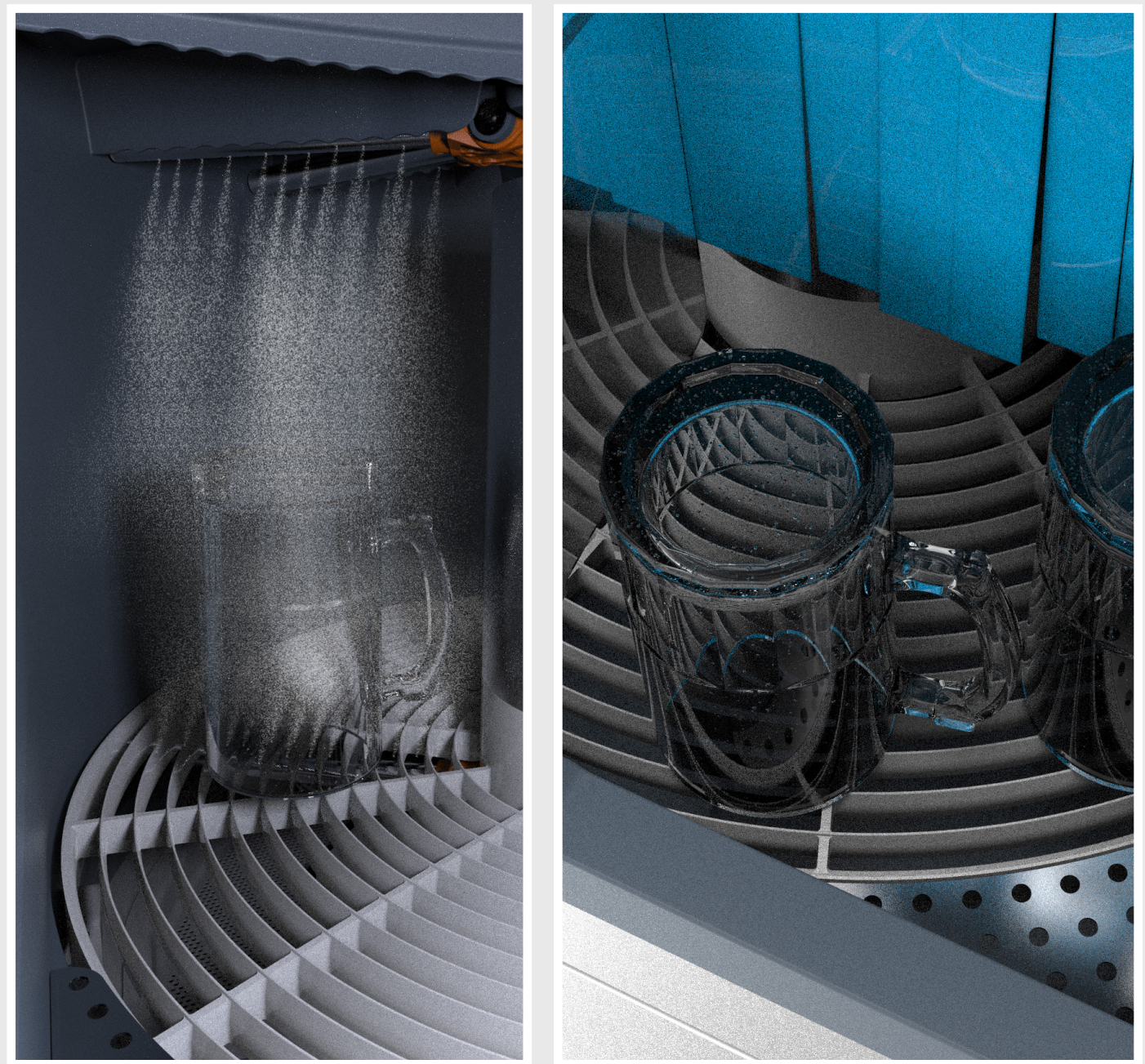


UNPARALLELED CLEANING POWER

CONVEYOR HIGHLIGHTS

The conveyor motor provides versatility and efficiency with selectable speed settings that allow for different soil conditions, ensuring industry leading cleaning while saving energy.

The lift out/drop in conveyor simplifies daily tasks and maintenance, reducing downtime and operating costs. Upgraded control technology include conveyor sensing, reducing the risk of glass damage should a jam occur.



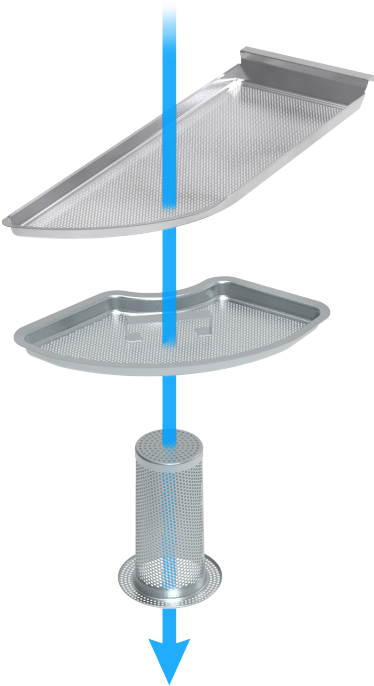
EFFICIENT USE OF SPACE

The system's new compact 24" design fits perfectly in tight spaces, adapts to various kitchen and front-of-house layouts, and provides 25% more output than undercounter models.



TRIPLE FILTRATION

Experience peace of mind with our Triple Filtration system, developed to provide high quality performance and premium results. Every stage of our Triple Filtration system is meticulously designed to enhance both machine reliability and the quality of your wash results.



INTEGRATED TANK AND WASH CHAMBER

Our innovative design ensures effortless user access for daily operations from the front of the machine.

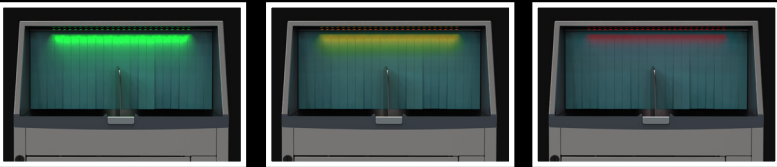
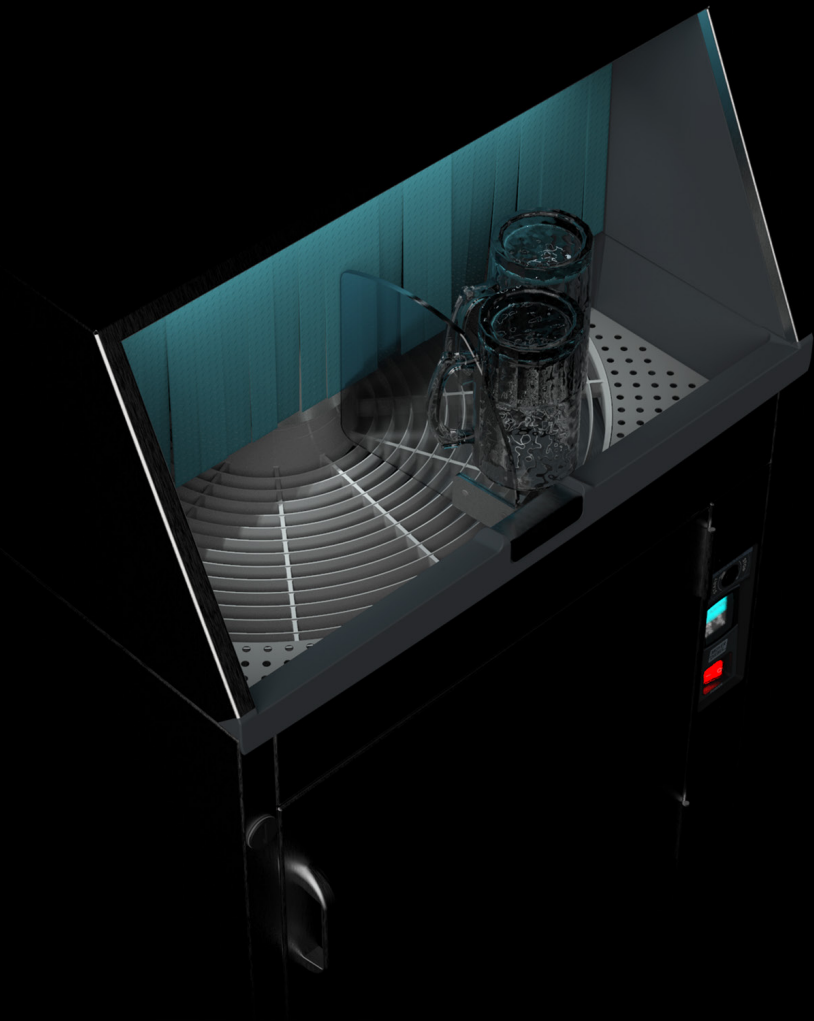
The advanced composite wash tank design significantly enhances corrosion resistance, ensures superior thermal control, and protects delicate glassware, outperforming traditional designs.

JOIN THE REVO LUTION



LED LIGHTS

Let the DF Revolution speak for itself with our Standard Integrated Smart LED Lights. These lights offer operators unparalleled status updates from across the bar, ensuring they are always informed. The adjustable light intensity suits both bright and dark environments, providing optimal user awareness without disrupting your guest experience.



Our innovative color-changing LEDs serve as beacons, instantly informing bartenders of the glasswasher's status. Preprogrammed color shifts provide immediate feedback when action is needed.



PREMIUM OPTION

INTEGRATED CHEMICAL SENSOR (Factory installed only)

Elevate your cleaning performance with our state-of-the-art chemical management technology, designed to deliver superior results every time.

ACCESSORIES

DRAIN TRAY

Our improved Drain Tray and Waste Collector are designed to keep excess soil and drink debris out of the wash chamber. Enjoy hassle-free functionality and superior performance.



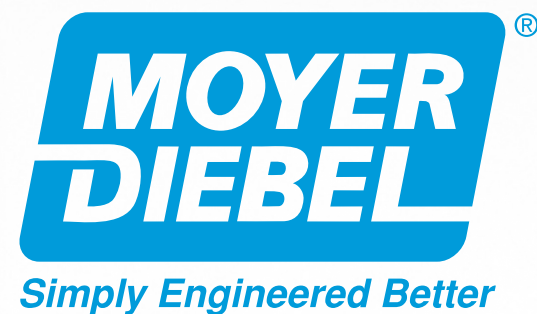
BAR MAT

Sized to fit perfectly on top of your new DF Revolution, this bar mat is a must-have for any efficient bar setup.





Efficient. Innovative. Powerful.





(800) 532-8591 | moyerdiebel.com | 3765 Champion Blvd, Winston-Salem NC 27105

(800) 263-5798 | mdlcanada.com | 2674 North Service Rd, Jordan Station ON L0R 1S0

In line with policy to continually innovate, develop, and improve its products,
Moyer Diebel reserves the right to change specifications and designs without notice.

